



Guide to Festival Access & Facilities

This practical and visual guide provides descriptive information about the venues and spaces where events are taking place. The guide is not exhaustive, but does aim to provide as much information as possible so that visitors to the festival are aware of what to expect on the day.

Friendly festival volunteers will be available and ready to provide help and support in accessing the event spaces, and finding the nearest suitable seating, toilets and other facilities.

Videos

A selection of videos showing access and facilities can be viewed on the festival website at whitchurchfolk.com/access

Contact

Please do drop us an email on info@whitchurchfolk.com with any questions or comments.

Acknowledgements

This guide is the direct result of Emily Hayward Smith's work as Accessibility Advisor on the festival team. Grateful thanks to Emily for her invaluable advice, knowledge and experience, generously shared.

Festival venues & spaces

The guide contains information about all of the following venues and spaces.

PLACE

DESCRIPTION

The Town Hall

Festival Information & Wristband collection

Festival Hub

Outdoor area with Festival Merchandise, Food & Drink Stalls, Morris Dancing & other displays. Starting location for parade.



Silk Mill Lawns

Outdoor Morris Dancing, Maypole & other displays



All Hallows Church

Concerts

Methodist Church

Concerts



School Theatre

Concerts



School Sports Hall

Ceilidhs



Gill Nethercott Centre

Indoor space/foyer with seating



Parish Hall

Workshops

Baptist Church

Children's activities & workshops



The White Hart Hotel

Music Sessions, Food & Drink, indoor & outdoor seating

The Kings Arms

Fringe Festival Stage, Food & Drink, indoor & outdoor seating

The Bell Inn

Sing-arounds, drinks, traditional pub



Bell Street Car Park

Car park in the town centre with accessible toilets



Venues with this symbol
have Accessible & Standard toilets

THE TOWN HALL

Newbury Street, Whitchurch, RG28 7DW

Festival Information & Wristband collection.

The downstairs office of the building will be open to festival-goers to pop in to collect festival wristbands, programmes, and to find out information.

Entrance: flat and accessible to wheelchairs.



THE FESTIVAL HUB

Next to *Kudos Living* shop

7 Church St, Whitchurch RG28 7AD

Outdoor area with food and other stalls, a place to buy Festival Merchandise (T-shirts etc) and watch Morris Dancing and other dance & music displays.

Entrance: Please be aware of passing traffic especially where pavements are narrow and lots of people may be milling about. There are also uneven pavements in the vicinity.



SILK MILL LAWNS

28 Winchester St, Whitchurch RG28 7AL

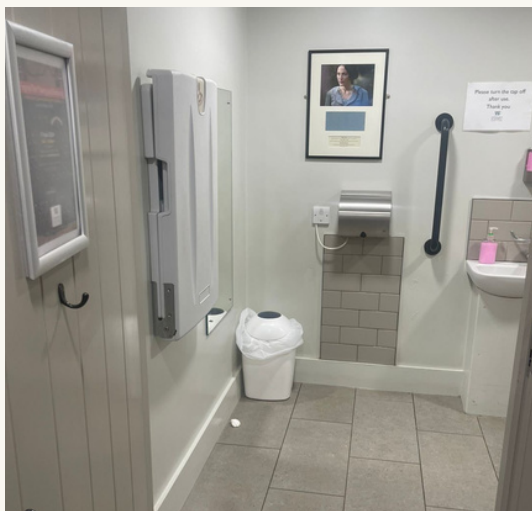
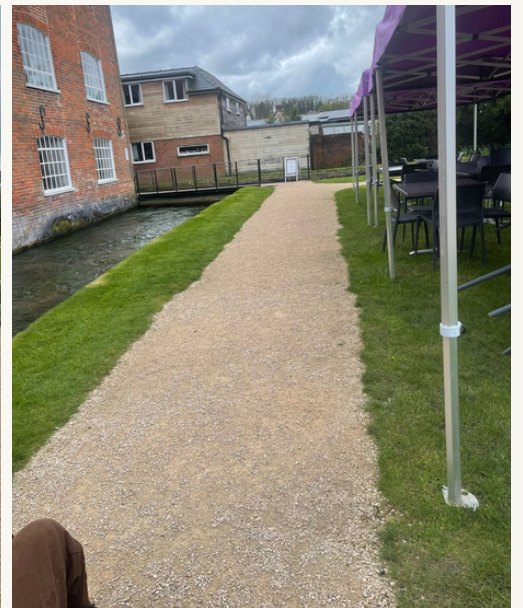
Outdoor Space for Morris Dance displays, workshops & music.

Cafe & toilets: The Silk Mill cafe is accessible, with accessible toilet plus two large standard toilets.

Seating & viewing: There is seating for cafe customers under the purple gazebo and inside the cafe. An accessible viewing area will be designated with seating and space for wheelchair users to enjoy the displays from the path around the lawn.

Paths: There is a compacted gravel path around the edge of the lawn that wheelchairs can pass over fairly easily.

Disabled parking: There are 2 spaces for blue badge holders, directly in front of the cafe and lawn entrance.



ALL HALLOWS CHURCH

44-32 Church St, Whitchurch RG28 7AS

Concert venue in afternoon & evening

Entrance: with both sets of double doors open, the entrance is wheelchair accessible [**photo 1**]. Volunteers will be on hand to welcome festival-goers.

Toilets & Bar: These are located in the Churchrooms, adjoining the main church. To reach them, there are two routes:
The first route is via the steps at the back of the church.
The step-free, accessible route is outdoors. Turn right out the main church doors and then go up the slope [**photo 3**] and up the ramp to the Churchroom door. Inside there are accessible & standard toilets and bar. Please note, part of the slope is steep. A volunteer will be on hand to accompany festival-goers up the slope if desired.

Drop off: There is a layby in front of the church which can be used as a drop-off point [**photo 4**].

Seating: There will be a designated row of accessible seating located just in front of the rear section of pews [**photo 2**].

Distance to other events: It's 0.2 miles into the centre of the town (5-10 minutes if walking). The route is flat or gently sloped and on a pavement all the way. Watch out for a few uneven patches towards the town [**photo 5**].



METHODIST CHURCH

13 Winchester St, Whitchurch RG28 7RQ

Seated concerts during the morning & afternoon.
Refreshments and toilets (toilets are not accessible).

Entrance: the main entrance is step-free, with a sloping ramp up to double doors.

Toilets: These are accessed from the outside, down the left hand side of the building to a blue door. There are steps up to the blue door. Wheelchair users and others who require accessible toilets are directed to use the fully accessible toilets at the nearby Gill Nethercott Centre.

Seating: There will designated accessible seating areas allowing easy access in and out.



SCHOOL THEATRE & SCHOOL SPORTS HALL

Testbourne Community School, Micheldever Road, Whitchurch, Hampshire, RG28 7JF

Concerts are in the **Theatre** and ceilidhs are in the **Sports Hall**. The whole site is accessible and there is level access into both buildings.

Entrance & Parking

The entrance to the school is shown in the photo. There are no designated accessible parking spaces. Volunteers will assist you on arrival.



School Sports Hall: There will be plenty of seating in different areas of the hall during the ceilidhs.

School Theatre: There will be designated accessible seating for the seated concerts here.

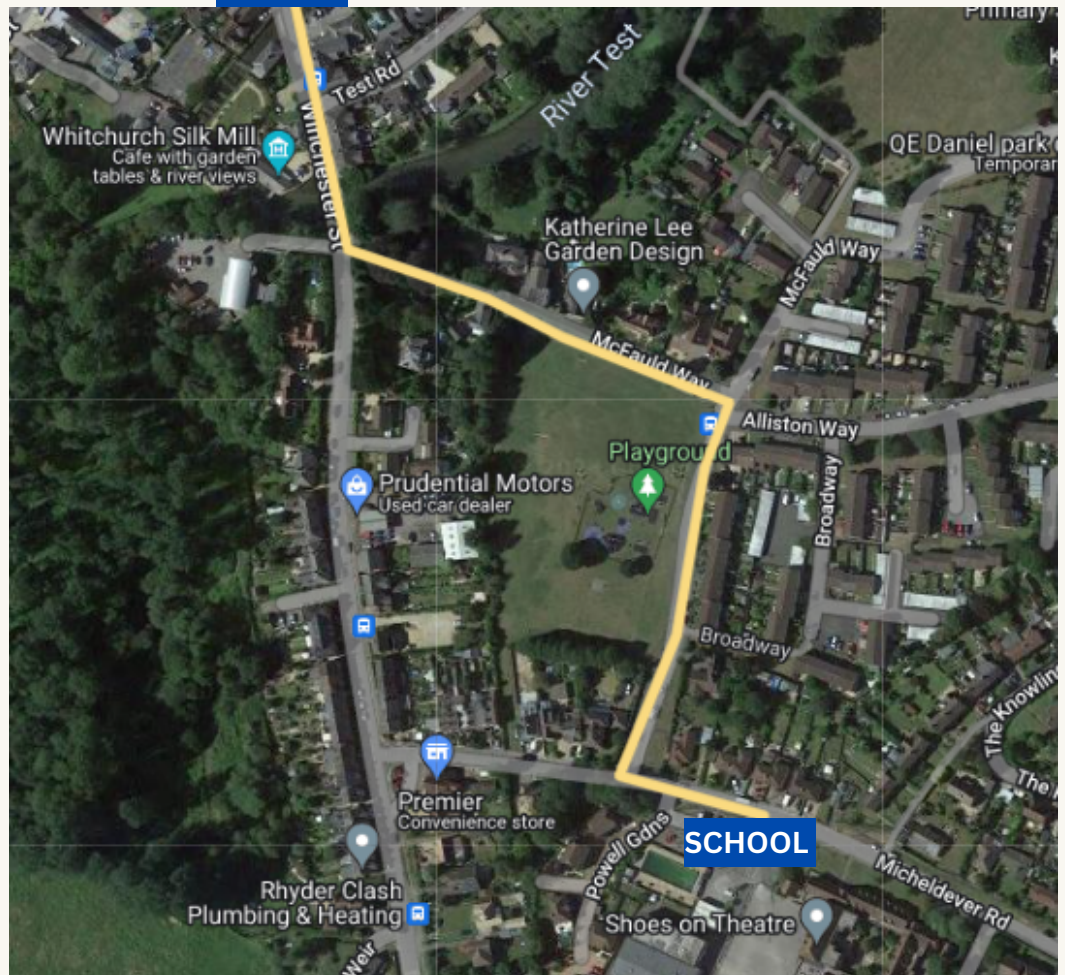


TOWN

Route between town and the school

The yellow route shown is along pavements and footpaths into town.

The distance between the school and the Silk Mill (for example) is 0.4 miles; 9 minutes if walking.



GILL NETHERCOTT CENTRE (GNC)

Winchester St, RG28 7HP

The foyer is a pleasant space available for visitors to head indoors should they be seeking a quieter space. There is some seating and a glass panel in the floor to view the stream running beneath the Centre.

Entrance: Accessible with ramp up to automatic doors.

Toilet: Accessible and standard toilets, easily accessible by wheelchairs and prams, with baby changing facility.

Parking - there are a couple of disabled parking spaces for blue badge holders in the GNC car park.



PARISH HALL

28 London Road, RG28 7LQ

Venue for workshops right in the heart of town.

Entrance: Accessible, step-free access.

Toilet: Accessible and standard toilets.

Parking - there is no parking at the Parish Hall. The nearest car park is Bell Street.



BAPTIST CHURCH

Newbury Street, RG28 7DR

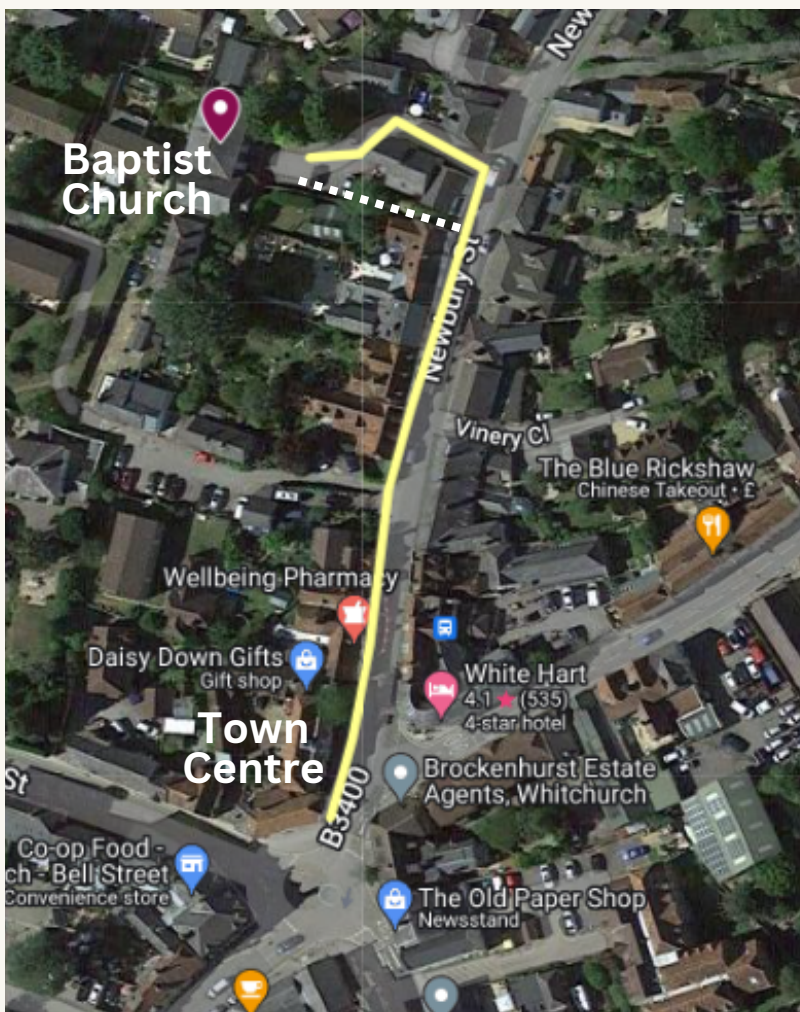
Children and family activities and workshops.

Getting there: The church is a few minutes walk from the crossroads in the town centre. Pedestrian access is signposted on the left as you go up Newbury Street [**dotted line on map**]. If you go on a little further, there is a side road that leads to the church car park [**see map**].

Entrance: Accessible, with a slight ramp up to the front door.

Toilets: standard toilets available. The nearest accessible toilets are at The White Hart Hotel or Bell Street Car Park.

Parking: there will likely be some space in the car park for those with access needs or young children.



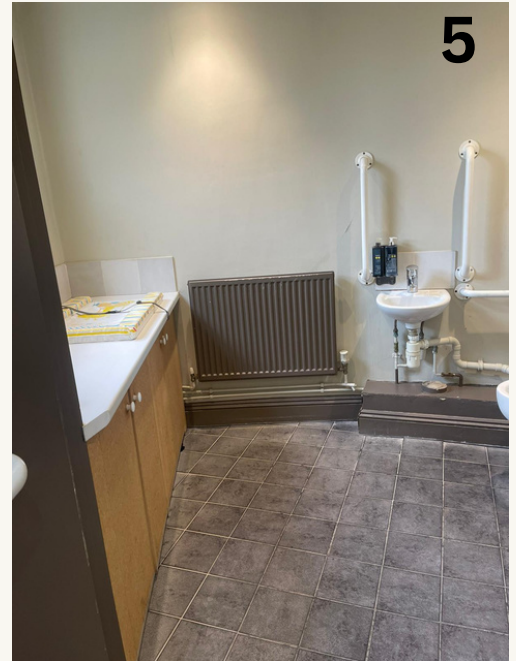
THE WHITE HART HOTEL

Newbury St, Whitchurch, RG28 7DN

Hotel and Pub serving food and drinks all day and evening. And host to informal music sessions.

Entrance: The main entrance to the pub is up several steps. The accessible entrance is around the back of the building. Go to the right as you look at the front door (go along London Street). Go through the car park and there is a ramp up to the rear hotel door [photos 1, 2 and 3]

Toilets: There is a really spacious accessible toilet with designated baby change [photos 4 and 5].



THE KING'S ARMS PUB

10 Church St, Whitchurch, RG28 7AB

Free Fringe music on the outdoor stage in the pub garden throughout the afternoon.

Entrance: to the left of the pub, there is flat access into the Pub garden.

Toilet: There is no accessible toilet here. The closest is Bell Street Car Park, a couple of minutes away.

Garden Stage: Please note there is a slight slope up to the garden where the fringe stage is.



THE BELL INN

28 Bell Street, RG28 7DD

Sing-arounds in this traditional pub serving drinks and snacks. There's a small outdoor patio accessed from within the pub.

Entrance: not accessible to wheelchairs.



BELL STREET CAR PARK

Bell Street, RG28 7AE

Free public car park with some disabled spaces for blue badge holders [photo 3]

Toilets: There is an accessible public toilet with Radar Key entrance [photo 2]. Turn left at the Blue Ginger Restaurant for ramped access to toilets and car park [photo 1]

